

REAL-WORLD EXAMPLE

# flexijet<sup>3D</sup>



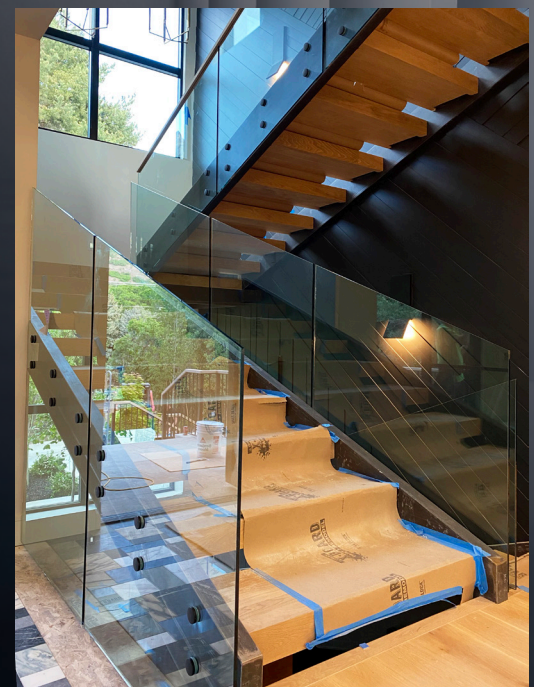
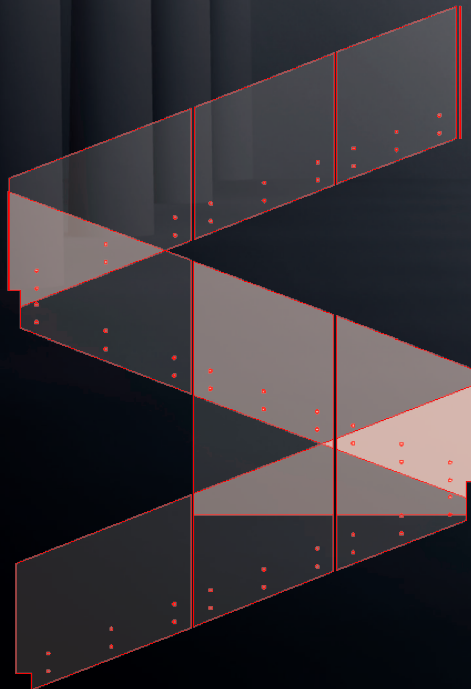
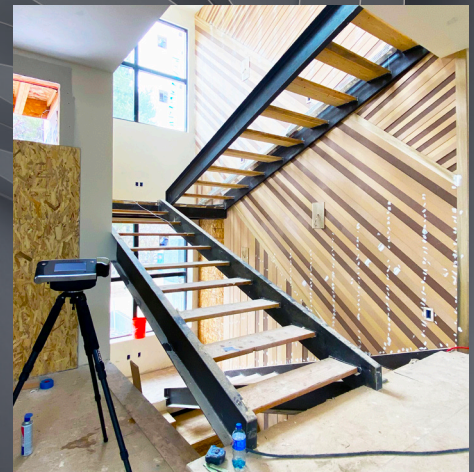
## GLASS RAILING ON STEEL STRINGERS WITH STANDOFFS

Project by: **JESKE GLASS**  
.com

Multi-level glass railing attaching to Steel stringers? No problem for Jeske Glass with their Flexijet!

Accurately measure the stairs and design the panels in FlexiCAD.

Then, use Flexijet laser to project to the centre of each standoff on the stringers - accurately pinpointing the exact drill points!



**flexijet<sup>3D</sup>**  
North America

T 1-844-MY-FLEXI  
@ sales@flexijet.info

[www.myflexijet.com](http://www.myflexijet.com)